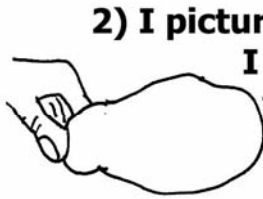


Clay Animal Pot

I think gentle and slow, when I am working with moist clay.

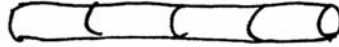


1) I start with an oval like shape.



2) I picture the animal I want to make.

I gently pull clay to form a head and a tail.

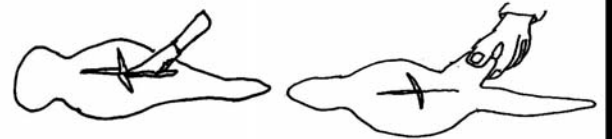


3) With another piece of clay, I roll a coil (a long thin cylinder). I estimate and divide it into four equal parts to form legs.



4) I add the legs one at a time. I am careful to firmly attach and smooth together the legs to the body. (If I do not, as the legs dry, they may crack and fall off.)

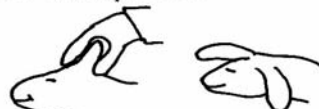
An alternative way to make the legs:
I cut a cross on the "belly" of the animal. I put my finger in the center of the cross and pull out each "V" to make the four legs.



5) I make my animal into a pot. I press my finger into the top and gently widen the hole.



I can cut the mouth open.



I can pull out ears.

6) I decorate.
I add detail.



Which clay sculpture techniques am I using?

Clay Creations ♥ Copyright © 2001-2009 All Rights reserved ♥ M.C.Gillis

This may be copied for personal use & sharing, not for commercial use.

Contact artist, mo@expandingheart.com, to give feedback or negotiate commercial & non-profit agreements.

More downloads at www.expandingheart.com & www.awesomeartists.com.